

BD Safe Handling Assessment



A road map for success

The risk of hazardous drug exposure to healthcare workers is real and significant. The threat of exposure can come from any place where hazardous drugs are present in your facility. Our new Safe Handling Assessment will help address HD exposure and create a plan to help protect your health care workers with BD product recommendations and training.



Detrimental effect on DNA¹²



Increased rates of cancer³⁴



Damage to internal organs⁵



Reproductive issues⁶⁷



Comprehensive assessments. Actionable data.

Our assessments, focused on the hazardous drug journey from procurement through disposal, are unlike any in the industry.



Proven methodology

We use a proven methodology developed through years of experience and rigorous practice.



Proprietary tools

We've put that learning into powerful, proprietary, digital tools.



Analytics and benchmarks

Your deliverable is a report filled with actionable data – analytics and benchmarks that provide a clear roadmap for safe handling of hazardous drugs with BD products for oncology care.



Evidence-based recommendations

BD product recommendations and training to help you achieve improved clinical practices and outcomes.



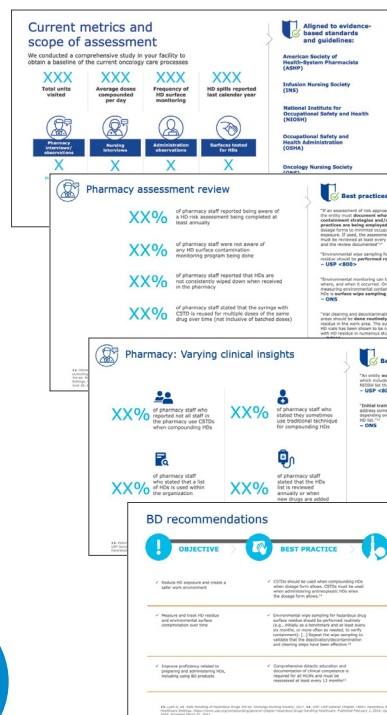
BD assessments

The first step toward improved outcomes

The potential impact of our recommendations is driven by the quality of the data. The assessments conducted by our staff include interviews, observations and surface contamination testing for both pharmacy and administration areas.

Once an assessment is complete, we analyze your data, comparing it to best-practice standards and guidelines. The resulting recommendations provide a detailed, actionable road map for safe handling of hazardous drugs with BD products for oncology care.

To learn more, contact your BD oncology and vascular care territory manager.



Assessments establish the baseline

Report out to discuss the findings

Recommendations provide a road map to success

Samples

BD provides this safe handling assessment to help customers identify areas of risk as it relates to hazardous drug compounding and administration. The safe handling assessment provides recommendations based on information the customer provides to BD. Such recommendations are not a guarantee of outcomes and actual outcomes may depend on a variety of additional factors.

References

- Cavallo D, Ursini CL, Perniconi B, et al. Evaluation of genotoxic effects induced by exposure to antineoplastic drugs in lymphocytes and exfoliated buccal cells of oncology nurses and pharmacy employees. *Mutat Res.* 2005;587(1-2):45–51. doi:10.1016/j.mrgentox.2005.07.008.
- McDiarmid MA, Oliver MS, Roth TS, Rogers B, Escalante C. Chromosome 5 and 7 abnormalities in oncology personnel handling anticancer drugs. *J Occup Environ Med.* 2010;52(10):1028–34. doi:10.1097/JOM.0b013e3181f73ae6.
- Skov T, Maarup B, Olsen J, et al. Leukaemia and reproductive outcome among nurses handling antineoplastic drugs. *Br J Ind Med.* 1992;49(12):855–861. doi:10.1136/oem.49.12.855.
- Hansen J, Olsen JH. Cancer morbidity among Danish female pharmacy technicians. *Scand J Work Environ Health.* 1994;20(1):22–26. doi:10.5271/jsjweh.1433.
- Sotaniemi EA, Sutinen S, Arranto AJ, et al. Liver damage in nurses handling cytostatic agents. *Acta Med Scand.* 1983;214(3):181–189. doi:10.1111/j.0954-6820.1983.tb08593.x.
- Lawson CC, Rocheleau CM, Whelan EA, et al. Occupational exposures among nurses and risk of spontaneous abortion. *Am J Obstet Gynecol.* 2012;206(4):327.e1-8.
- Hemminki K, Kyronen P, Lindbohm ML. Spontaneous abortions and malformations in the offspring of nurses exposed to anaesthetic gases, cytostatic drugs, and other potential hazards in hospitals, based on registered information of outcome. *J Epidemiol Community Health.* 1985;39(2):141–147. doi:10.1136/jech.39.2.141.

BD, Franklin Lakes, NJ, 07417, U.S.

bd.com

